



# Early Action Plan

Akaki Kality & Nifas Silk Lafto Sub Cities

Ethiopia, Addis Ababa

## Introduction



Frequent flooding affects many urban communities in Addis Ababa, including Akaki Kality and Nefas Silk-Lafto Sub-cities. This flooding commonly causes loss of life, displacement, property damage and disease outbreaks.

This Early Action Plan (EAP) for Akaki Kality and Nefas Silk-Lafto sub-cities provides simple guidance that communities in Akaki Kality and Nefas Silk-Lafto in collaboration with the city of Addis Ababa disaster management authorities, woreda and local leaders, as well as non-government and private institutions, can use to effectively coordinate preparation and early action when flooding is expected.

Through support from the WISER 3 DARAJA climate resilience program, this EAP was co-developed by the Ethiopian Red Cross Society (ERCS), representatives of communities in Akaki Kality and Nefas Silk-Lafto, Ethiopian Meteorological Institute (EMI) and representatives of the Addis Ababa city government. Through early action, communities can reduce loss of life, infrastructure damage, livelihood disruption, and health risks.

## Objectives of the Early Action Plan



**Enhance risk-informed decision making** among key government sectors, private institutions, and communities prone to flood risks.



**Strengthen the capacity** of the local government sectors and communities by bridging the weather information gap.

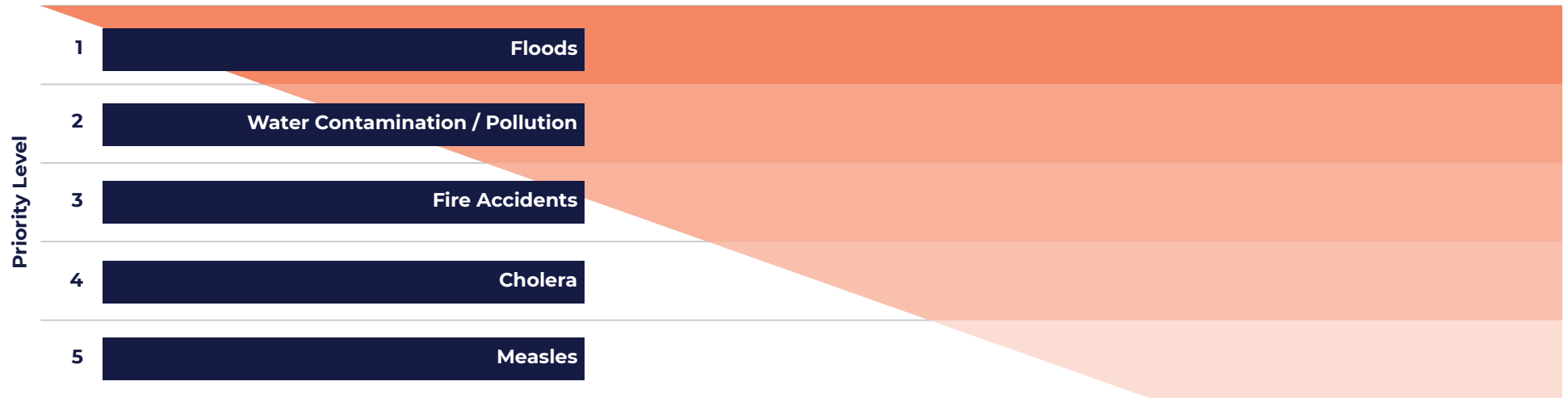


**Link key actors to strengthen coordination and unlock resources** for enhanced impact of early warning and early action efforts.

# Understanding Flood Risk

## Major Hazards Identified

During community workshops, stakeholders identified several hazards affecting the settlements.



This Early Action Plan focuses primarily on floods, due to available resources and forecast reliability.

## Flood Risk in Addis Ababa

Floods in Addis Ababa mostly occur during the **Kiremt rainy season** (June–September).

Season	Months	Weather
<b>Bega</b>	Dec – Feb	Hot, driest season with hot days and cool nights
<b>Belg (Spring)</b>	Mar – May	Short rainy season with light rains and pasture regrowth
<b>Kiremt (Summer)</b>	Jun – Sept	Main rains with cooler temperatures
<b>Tseday (Autumn)</b>	Oct – Feb	Harsh dry season with very hot temperatures

## Impact Data

Aug  
2018

### Woreda 7 (Nifas Silk Lafto Sub City)

**Trigger:** Intense rainfall and saturated soils caused rivers and drainage systems to overflow.

**Impact:** Flooding caused casualties and displacement, damaged drainage infrastructure and electricity networks, and forced the closure of businesses, markets, and the Akaki industrial zone.

**Response:** Authorities and partners conducted rescue operations, established temporary shelters, and distributed emergency food and non-food relief items.

### Mekanisa Germen Adebabay

**Trigger:** Prolonged heavy rainfall combined with poor drainage and lack of riverbank protection in low-lying settlements.

**Impact:** Loss of life, destruction of homes and schools, infrastructure damage, and disruption of small businesses.

**Response:** Emergency cash assistance to affected households, planning for flood walls, relocation from riverbanks, and improved drainage and urban greening.

Aug  
2021

2020 -  
2022

### Akaki Riverbanks

**Trigger:** Intense rainfall and saturated soils caused rivers and drainage systems to overflow.

**Impact:** Flooding caused casualties and displacement, damaged drainage infrastructure and electricity networks, and forced the closure of businesses, markets, and the Akaki industrial zone.

**Response:** Authorities and partners conducted rescue operations, established temporary shelters, and distributed emergency food and non-food relief items.

### Woreda 12 (Nifas Silk Lafto Sub City)

**Trigger:** A weather forecast of more than 30 mm rainfall within 24 hours combined with hailstorms caused severe flooding in low-lying areas.

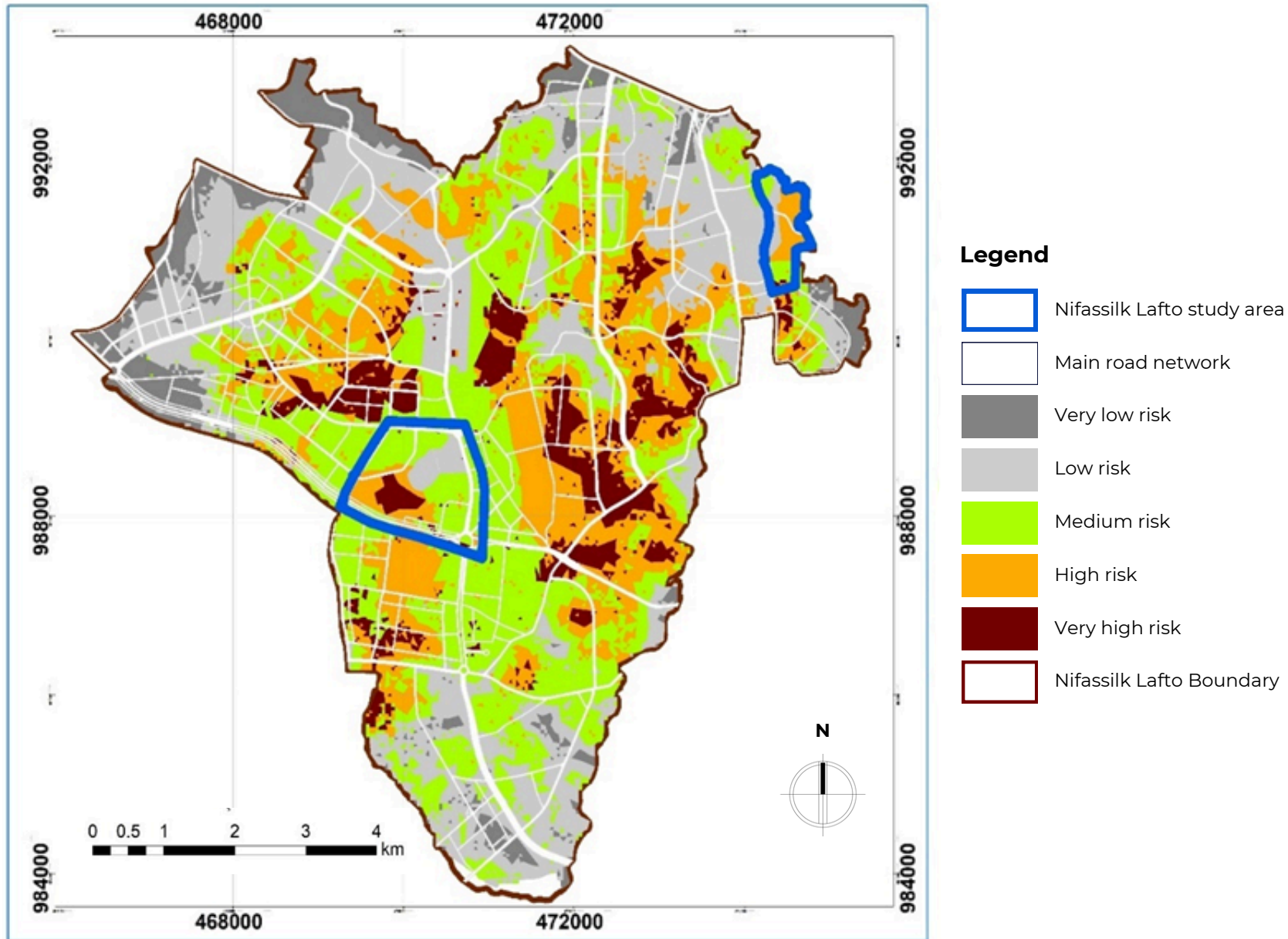
**Impact:** 4 deaths, 80 displaced people, 36 destroyed homes, and resulted in trauma, livelihood losses, and business disruption.

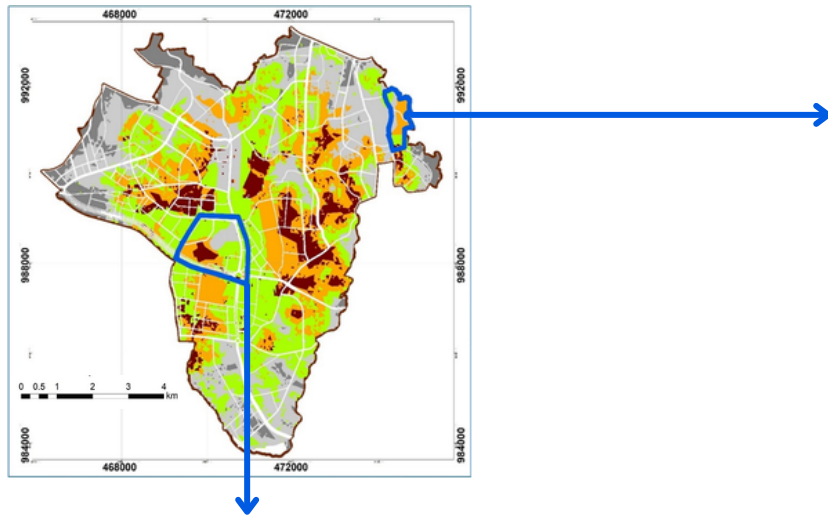
**Response:** Emergency rescue and relief operations including food and livelihood support, psychosocial assistance, and improvements to drainage systems and bridges.

Mar  
2023

# Nifas Silk Lafto Sub-City

## Project Sites and Flood Risk Zones

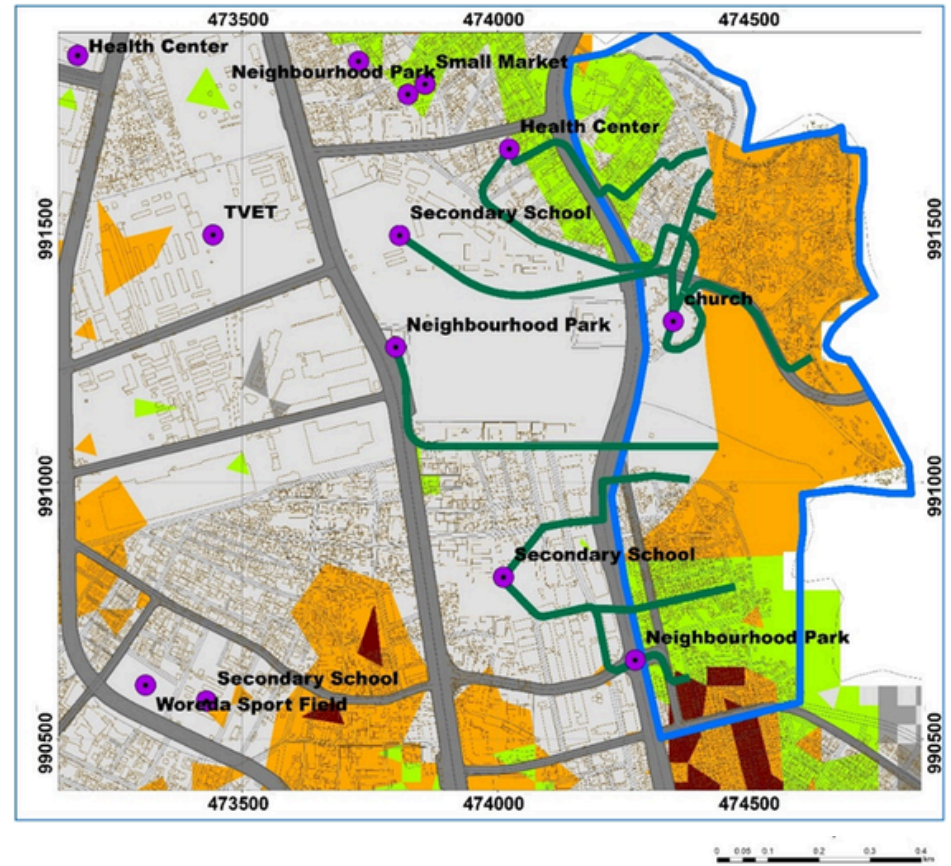




**Project Sites and Flood Risk Zones (Abrahmo Slasie Area)**



**Project Sites and Flood Risk Zones (Dafur)**

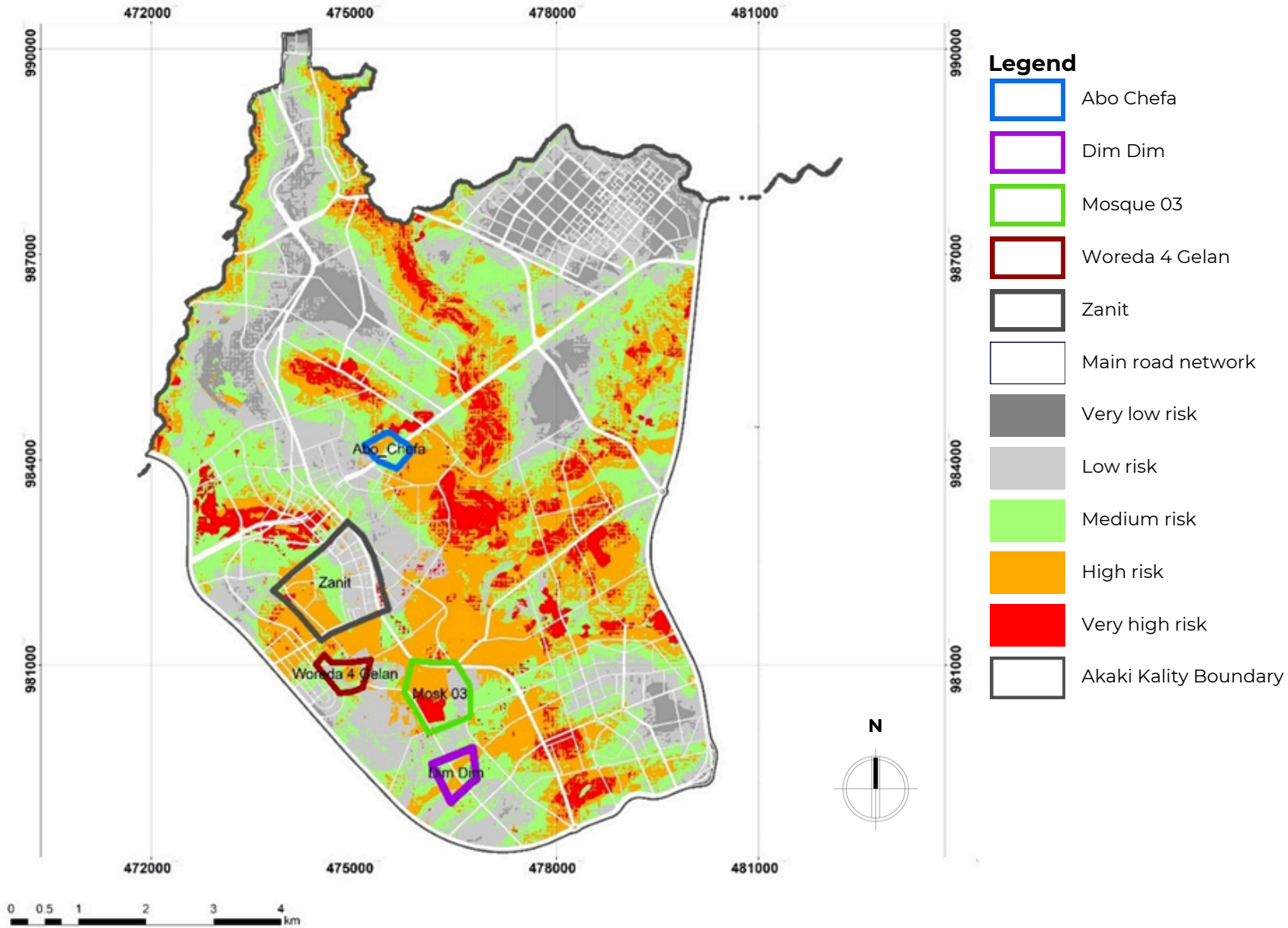


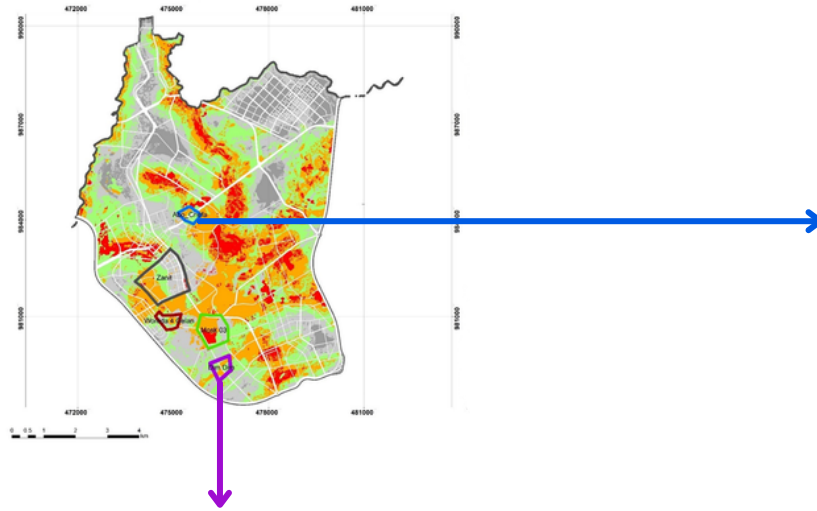
**Legend**

- Main road network
- Safe routes
- Evacuation areas
- Abrahmo Slasie Boundary
- Dafur Boundary
- Buildings
- Very low risk
- Low risk
- Medium risk
- High risk
- Very high risk

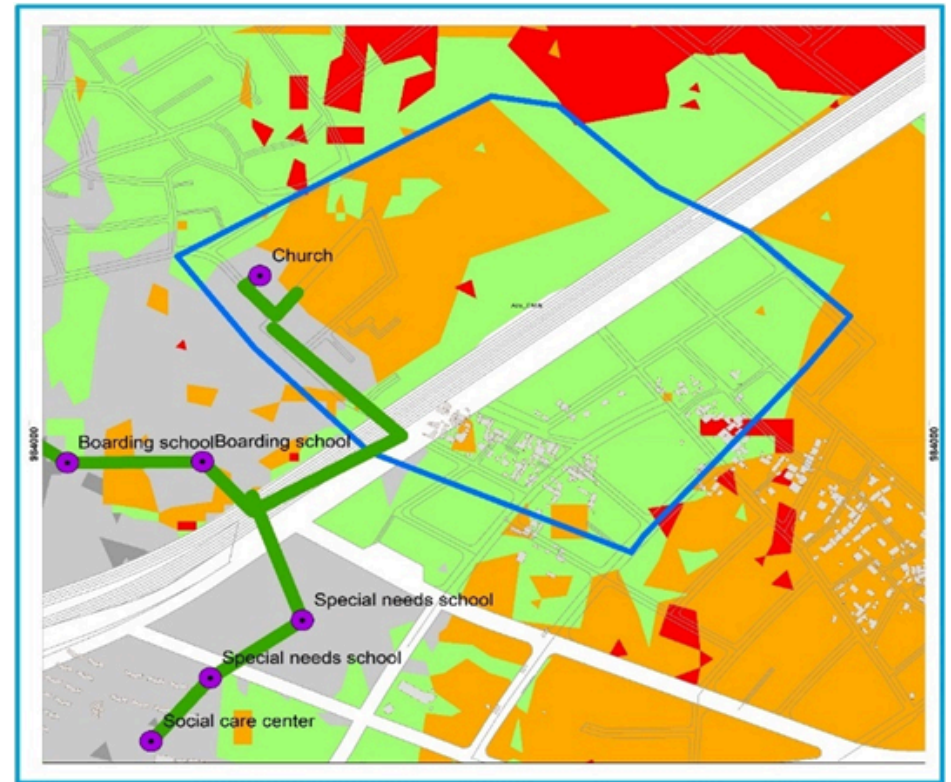
# Akaki Kality Sub-City

## Project Sites and Flood Risk Zones

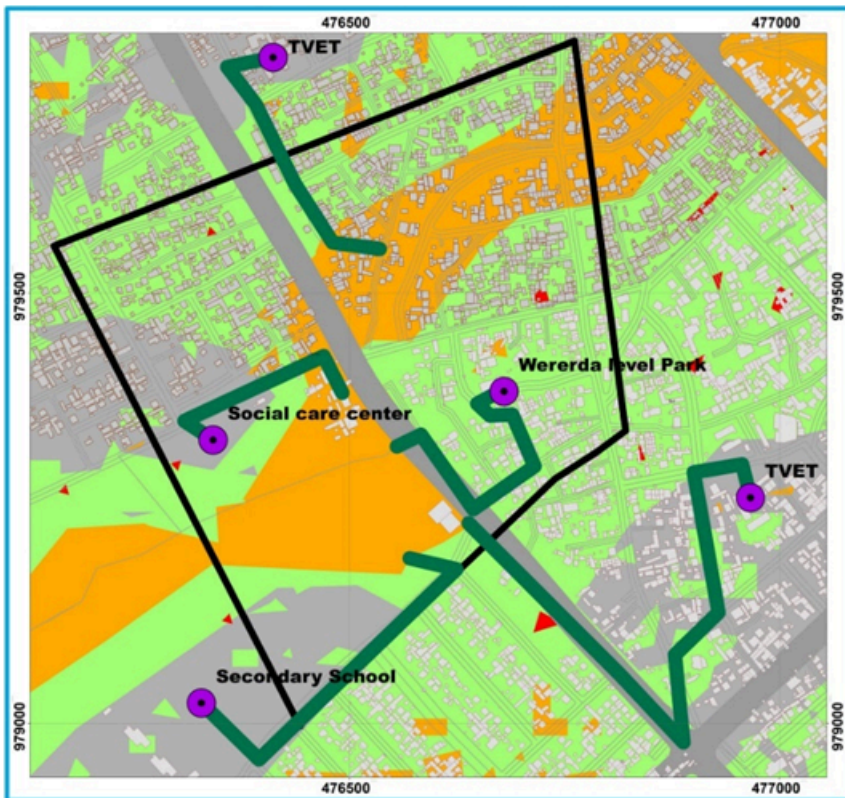




**Project Sites and Flood Risk Zones (Abo Chefa Project Area)**

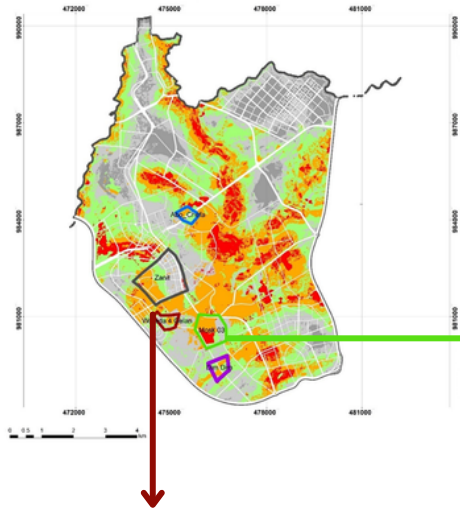


**Project Sites and Flood Risk Zones (Dim Dim Project Area)**

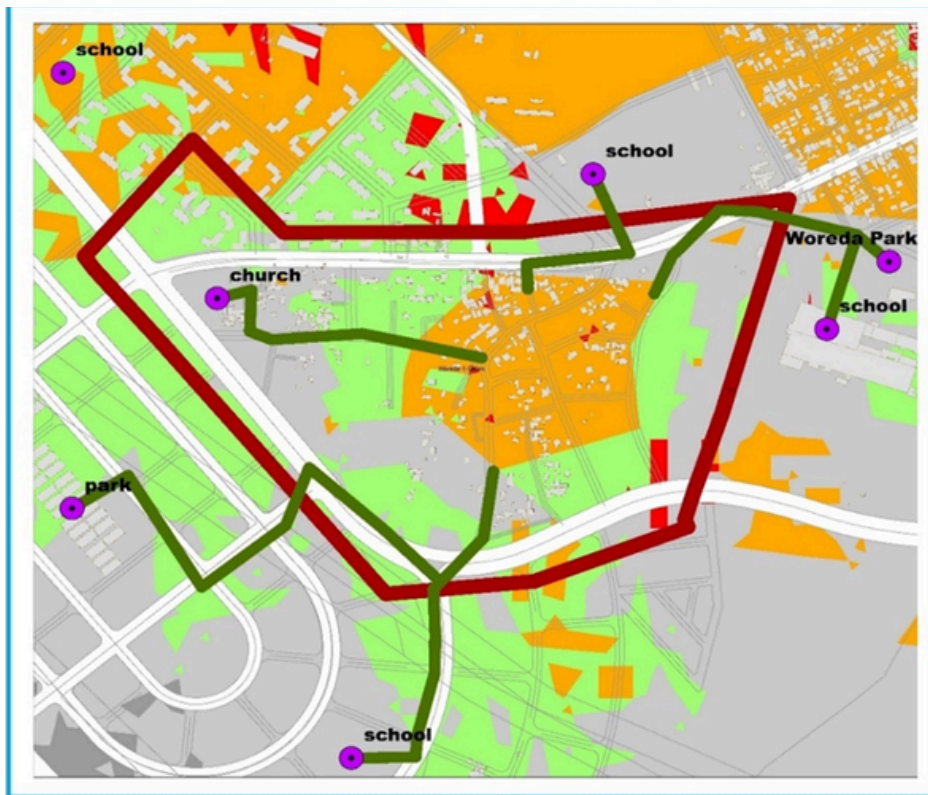


**Legend**

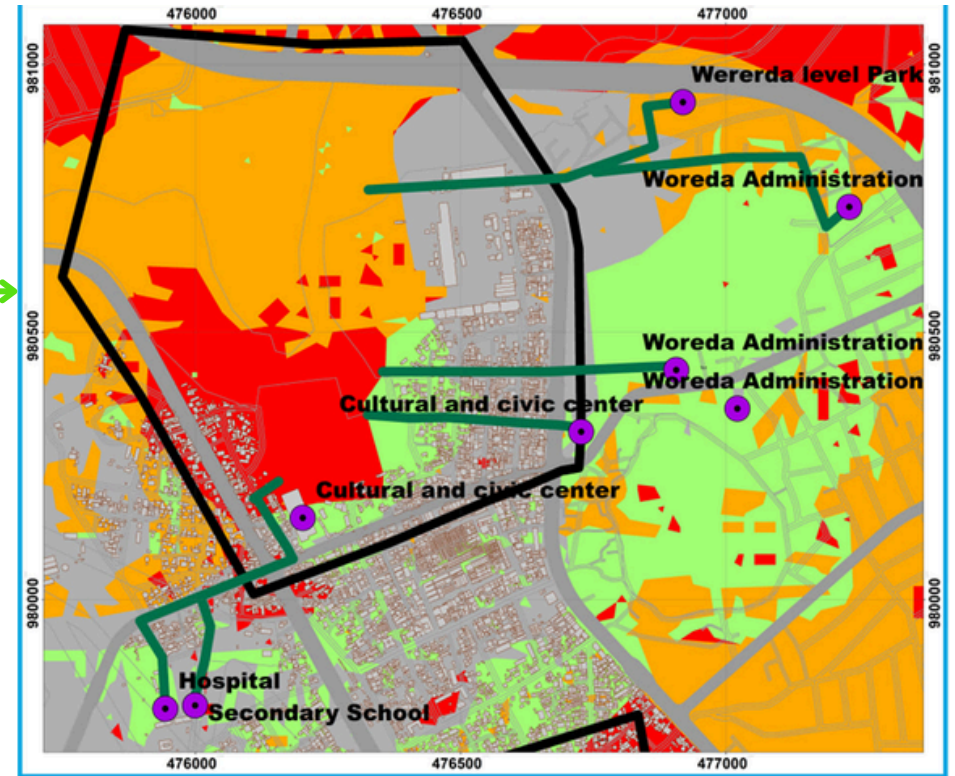
- Local road
- Main road network
- Buildings
- Very low risk
- Low risk
- Medium risk
- High risk
- Very high risk
- Safe routes
- Evacuation areas
- Dim Dim Project Area Boundary
- Abo Chefa Project Area Boundary



**Project Sites and Flood Risk Zones (Woreda 04 Gelan Project Area)**

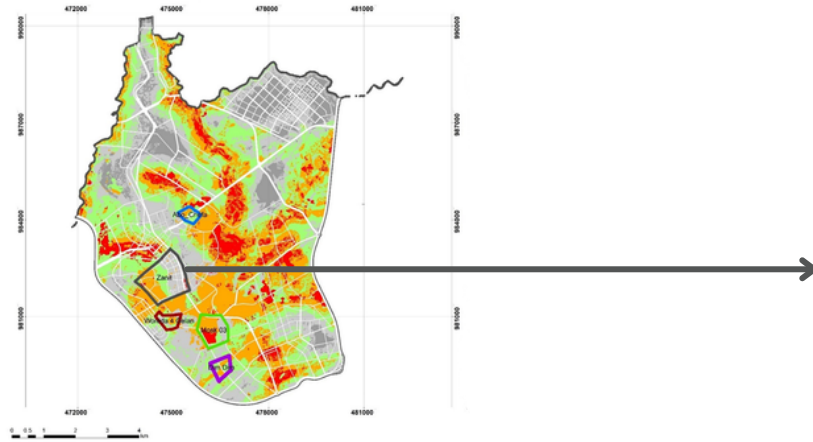


**Project Sites and Flood Risk Zones (Mosque Project Area)**

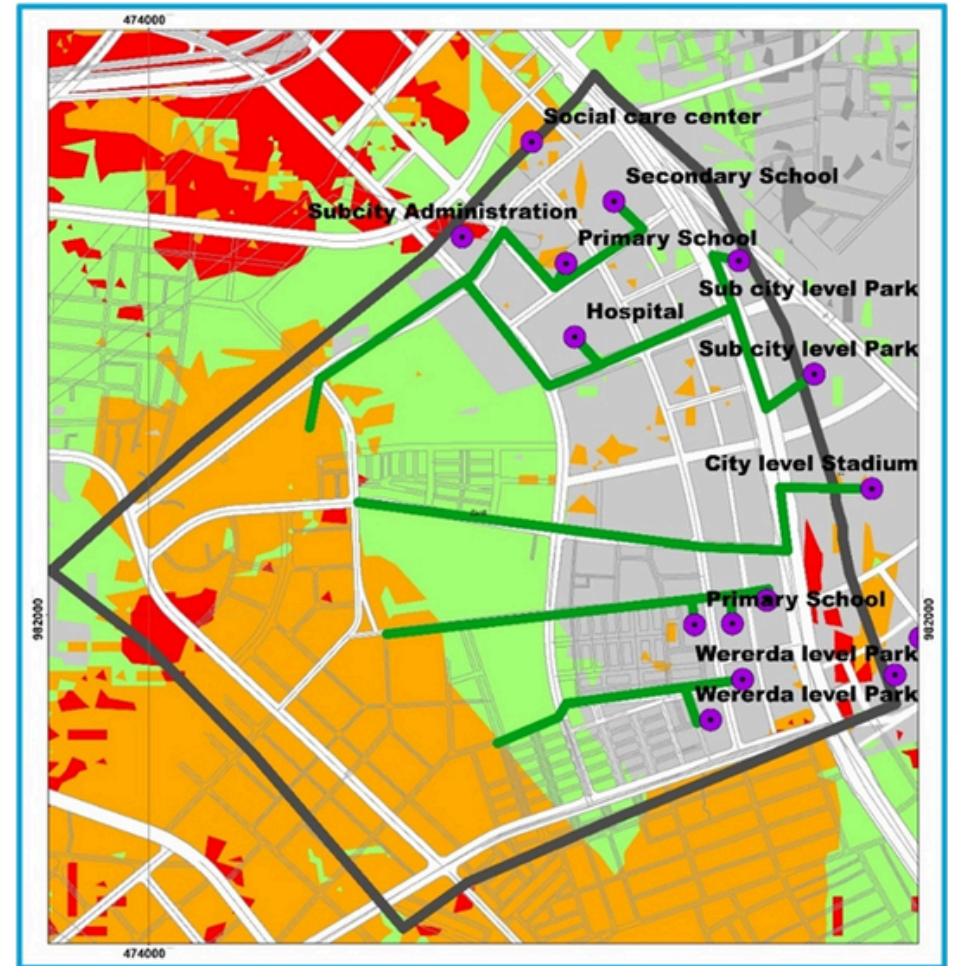


**Legend**

- Local road
- Main road network
- Buildings
- Very low risk
- Low risk
- Medium risk
- High risk
- Very high risk
- Safe routes
- Evacuation areas
- Mosque Project Area Boundary
- Woreda 04 Gelan Project Area Boundary



**Project Sites and Flood Risk Zones (Zente Project Area)**



**Legend**

- Local road
- Main road network
- Buildings
- Very low risk
- Low risk
- Medium risk
- High risk
- Very high risk
- Safe routes
- Evacuation areas
- Zente Project Area Boundary

# Weather Forecasts & Early Warning

The Ethiopian Meteorological Institute (EMI) provides localised forecasts for Addis Ababa including:

- rainfall forecasts
- temperature forecasts
- moisture levels
- vegetation monitoring
- hydro-meteorological advisories

These forecasts help communities anticipate heavy rainfall and prepare early actions, available seasonally, weekly and daily.

## Early Warning Communication

Forecast information is shared through multiple platforms to reach communities quickly, including:



**TV and Radio**  
(Government owned Station)



**Social Media**  
(Telegram Group Channel)



**Public meetings and through community organizations**



**SMS**



**Megaphone**



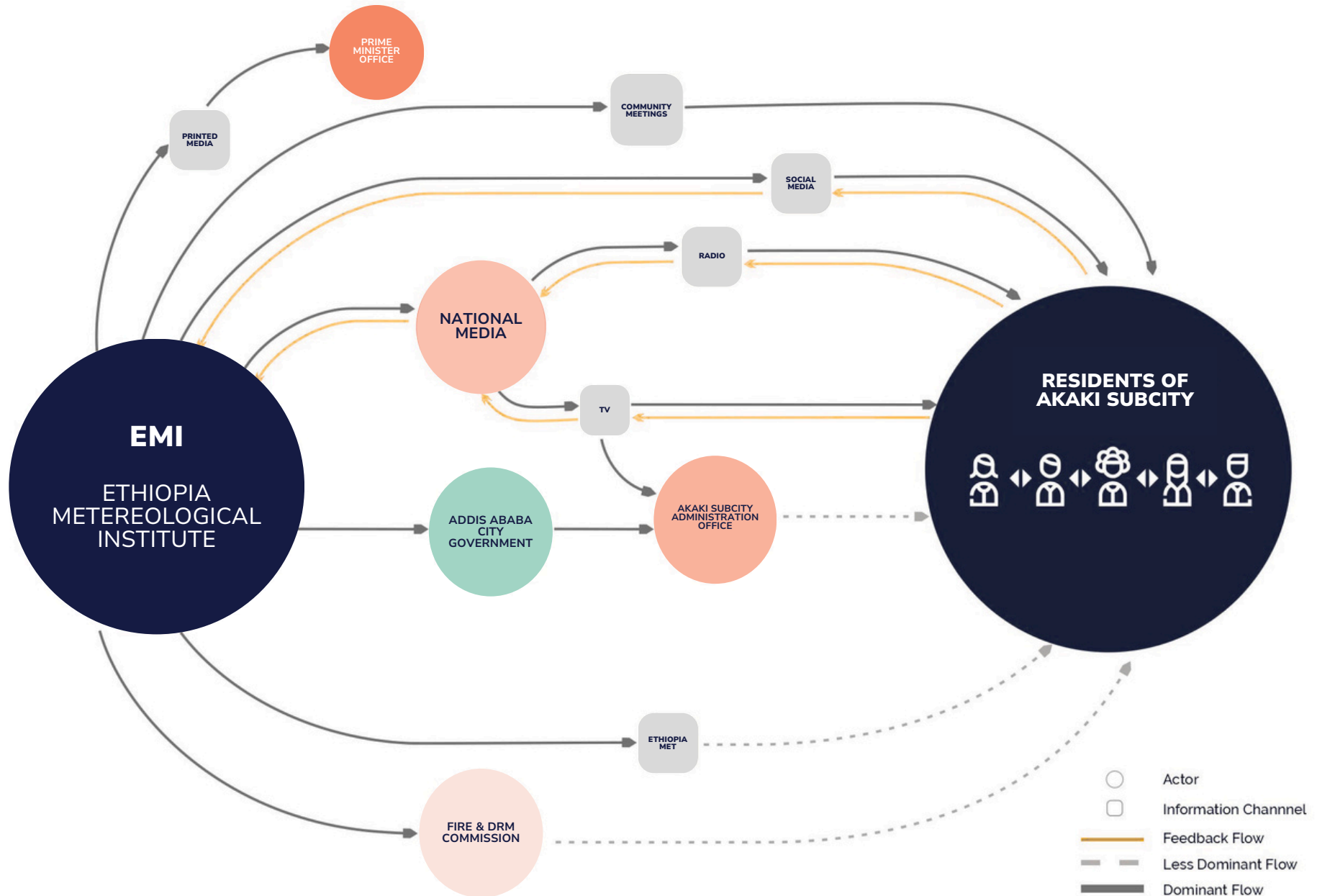
**Official Website**

The different community organisations involved include school clubs, women associations, youth associations, person with disability associations, *edir*, and religious sites.

This diversified information sharing strategy provides the target community with early access to forecast information and alternative sources of short and localised weather and climate information along with advisory messages.

# Severe Weather Events Information Flow (Ethiopia Meteorological Institute)

## Akaki Kality Subcity



## Trigger Development

A trigger is **a specific warning sign for hazards that informs when and how the specific hazard is going to happen.** It helps to plan and implement early action and facilitate preparedness. Technical experts from key actors & community representative have developed appropriate triggers & thresholds for flood and related hazards, as shown below:

	Alert Type	Trigger / Thresholds	Lead Time	Responsible Agency
Medium Alert	Meteorological forecast	Forecast of 10 mm to 30 mm of rain within a 24-hour period	24-48 hours	EMI → DRM office-EW-committee
	Monitoring of streams, rivers and drainages	Monitoring of streams, rivers and drainages	3-6 hours	EW-Committee, DRM office, Ministry of water, river watch person
	Traditional early warning signs	Wind & cloud changes, Increase in river speed and turbidity, Loud noise of river	Several days to 1 week (based on local knowledge and seasonal patterns)	Local EW committee, community volunteers, local elders

	Alert Type	Trigger / Thresholds	Lead Time	Responsible Agency
Medium-High Alert	Flash flood due to heavy rainfall upstream	Pre-communication of up-stream river watch person 3-5 minutes after heavy rainfall in upper stream areas	3-5 minutes before heavy rainfall	River watch person, EW-Committee
	Flash flood due to dams	2-3 days prior alert from Gefersa Dam manager	2-3 days pre-announcements	Gefersa Dam management, EW-committee, DRM office
	Cholera impact	Recent flooding or water contamination events	1 month before the start of the season	Health Offices, DRM office, EW-Committee, ERCS
		5 suspect cases within target settlement areas	10 days	

	Alert Type	Trigger / Thresholds	Lead Time	Responsible Agency
High Alert	Meteorological Forecast	Forecast of >30 mm of rain within a 24-hour period	24 - 48 hours	DRM Command Center (Public Alert)
	Monitoring of streams, rivers and drainages	Monitoring of streams, rivers and drainages	1- 3 hours during heavy rainfall	EW-Committee, DRM office, ministry of water, river watch person
	Traditional early warning signs	Heavy & dark clouds, Wind & cloud changes, Increase in river speed and turbidity, Loud noise of river.	1hr before heavy rainfall	Local EW committee, community volunteers, local elders

# Early Actions

Early actions are defined as **measures that planned and implemented ahead of predicted hazards to effectively anticipate and respond in order to minimise or prevent potential impacts.**

## Medium Alert

### Triggers:

Forecast of 10 - 30mm of rain within a 24-hour period  
 Real-time monitoring of small streams / water channels  
 Increase in river speed and turbidity, and loud noise of river

Activities	Unit	Quantity/Timeline	Responsible Bodies
Daily-based weather forecast through multiple medias	Daily	-	EMI
Disseminate alerts using multiple channels such as megaphones, door-to-door, CBOs	Multiple channels	All platforms, daily basis during rainy season	EMI, ERCS, EW committee, DRM office, local government institutions
Installation of river gauges	Number	At all major rivers	EW-Committee, DRM office, Ministry of water & Energy
Mobilize river watching team & monitor twice daily, providing updates	Daily	In all river locations	EW-Committee
Conduct regular committee meetings	Monthly	12	EW-Committee, woreda authorities, DRM, CBO members
Identify rooms for temporary shelter & ensure equipping with basic items	Number	1-2 temporary evacuation sites within each settlement	EW-Committee, woreda authorities, DRM, education office, Religious institution
Clearance of drainage and desilting,	Monthly	12	DRM Committee, DRM office, ERCS, Green & beauty office, Environmental protection authority
Preparation of sand bags	Seasonal	Before rainy season	DRM Committee, DRM office, ERCS, Green & Beauty office, Environmental protection authorities

## Medium-High & High Alert

### Triggers:

Forecast of >30mm of rain within a 24-hour period

Real-time monitoring of rapidly increasing streams / water channels

Increase in river speed and turbidity, and loud noise of river

Flash flood alert

Activities	Unit	Quantity/Timeline	Responsible Bodies
Daily based weather forecast through multiple media platforms	Daily	-	EMI
Activating the Flood Early Warning Committee & Volunteers; call for committee meetings; assign clear roles following alert level	Number of meetings	Following alert, weekly basis	Woreda Early Warning Committee, Fire & DRM office
Place key personnel on standby; review evacuation routes; pre-identify temporary shelter sites and confirm capacity.	Number	1-2 temporary evacuation sites within each settlement	Early Warning Committee, Multi-sectoral coordination, Ethiopian Red Cross
Disseminate warning/alert via Telegram channel, media, , and CBOs (religious institutions, Edir, community meeting).	Multiple channels	All platforms on a daily basis during rainy season	EMI, EW Committee, Addis media network, school clubs, volunteers, CBO members
Pre-position food/non-food items (NFIs), and emergency kits to pre-determined staging areas.	Number of items	Based on community at risk supposed to be affected	DRM office, EW Committee, ERCS, CBOs, NGOs
Coordinate Emergency Response /DRM/Ambulance services.	-	-	EW committee, ERCS, Police office
Close floodgates temporarily at flood-prone sewage entry points and advise citizens to boil water/store	Number of sites	Frequent flood event locations & water point require maintenance	Water & Sewerage Authority, Health offices, community members
Communicate with upper river watch committee & decision making	-	During rainy season	River watch focal, EW committee, DRM office

## Preparedness & Contingency Plan

- **Map out evacuation shelters** including schools, churches, government offices, and community based buildings.
- **Establish emergency team** that constitutes the local government, community leaders, volunteers, DRM officials, emergency responders and others.
- **Set up communication channels** such as community meetings and megaphones.
- **Conduct community trainings** and drills.
- **Secure essential items** and preposition resources including basic supplies, non-perishable food, important documents, hygiene and sanitation items, medicines and others.



## Emergency Communication & Operation

(Evacuation, Emergency Shelter & Relief Support)

- Once the critical flood threshold is met, **initiate systematic evacuation** from high-risk zones to safe ground.
- **Deploy all available transport resources** to ensure the orderly and swift relocation of vulnerable populations.
- **Activate the local emergency taskforce** and early warning committee to lead the evacuation and manage the transition.
- **Open designated safe havens** (schools, churches, etc.) and provide immediate life-support services.
- **Deliver critical supplies**, including clean water, nutritious food, Non-Food Items (NFIs), and integrated Health and WASH (Water, Sanitation, and Hygiene) support.



## Post Flood Recovery Plan

- **Assess damages** affected areas before return.
- **Conduct community cleaning** and disinfection.
- **Involve** key stakeholders to restore affected services.
- **Support emergency relief** & livelihoods.
- **Map out resource mobilisation** from government, community, private sector & NGOs.
- **Conduct regular maintenance** including desilting.
- **Create awareness** for community members.

# Monitoring the Forecasts & Triggers

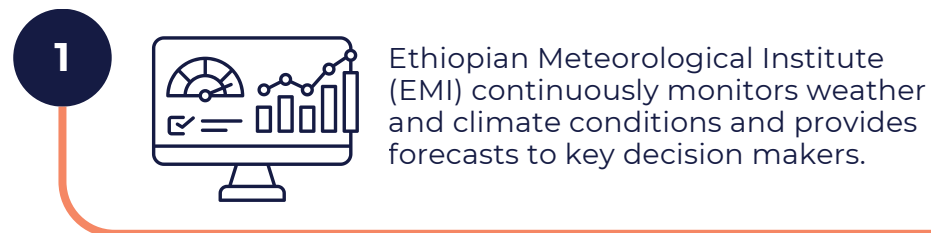
Robust and continuous monitoring of the potential hazards based on pre-agreed triggers is a critical component of Early Action.

Each of the key partners such as the **National EMI, ERCS, and woreda- and sub-city-level government sectors including Health Office, DRM office, and community leaders**, are responsible for conducting periodical monitoring and hold biweekly virtual and quarterly in-person meetings to review the progress of early implementation.

## Process for Monitoring and Activating Early Actions

The process involves coordination among multiple institutions, including:


- Disaster Risk Management Office
- Urban Planning Office
- Greenery and Beautification Office
- Ethiopian Red Cross Society (ERCS)
- Environmental Authority
- Health Office
- Water and Sewerage Authority
- Local community-based organisations
- Other relevant stakeholders



Forecast information is disseminated to communities through multiple communication channels to ensure early awareness.




**2**

**3**  Key stakeholders monitor forecast triggers and conduct ground verification to determine whether the thresholds for activating early action measures have been reached.

The Preparedness and Emergency Coordination Command reviews and analyses the information to decide whether safe evacuation and temporary shelter arrangements are required.



**4**

**5**  The command also recommends when preparedness actions should begin to enable timely and effective implementation of early response measures.

# Implementation Agreement

Intervention Type	Description	No. of Target People	Resources required			
			Unit	Quantity	ETB	Source
<b>Monitoring Forecast</b>	Routinely monitoring forecast released from EMI & alerting community members	2000 individuals	Hourly/Daily		-	
<b>Dissemination of Alerts &amp; EW</b>	Provide EW through megaphone & IEC materials such as brochures / posters	10,000 - 20,000 per woreda	Frequency		80,000	Local key government offices, CBO, ERCS
	Provide EW during public gatherings e.g. community and religious meetings	10,000 - 20,000	Number of people			-
<b>Continuous drainage status monitoring</b>	Installation of river gauges	400 - 500 people at risk	ETB	5	20,000	Ministry of water, DRM office
	Monitoring rivers	400 - 500 people at risk	Frequency/ day			-
	Flash lights	-	Number	2 / settlement	1000	EW-Committee
<b>Awareness Raising</b>	Community members at risk receive awareness through door to door, community gatherings / public meetings	1,000 people per woreda	Number			
<b>Pre-position of Essential Item to pre-determined areas</b>	Identify temporary shelters	400 - 500 people	Number	2 / settlement	-	Schools, religious institutions
	Installing the room fixtures (roof, light, house structure)		Number		100,000	Local key government offices, CBOs, private sectors, community volunteers
	Provision of food items		ETB		500,000	
	Provision of clean water		Litres	500	20,000	
	Provision of WASH & Dignity kits		ETB		50,000	
	Provision of mattresses		Number		200,000	
	Provision of shovels, pickaxes, ropes, and life jackets.		ETB		100,000	
	Heavy-duty bags		Number of sacks		20,000	
	Provision of trucks / rent or free services e.g. paying for fuel		Number	2	50,000	Private owners, volunteers

Intervention Type	Description	No. of Target People	Resources required			
			Unit	Quantity	ETB	Source
Close Floodgates, Repair & Disinfection of water Point	Number of Technical staff on stand by	2500 - 3000 people	Hourly/Daily		-	
	Number of water points disinfected		Frequency		80,000	Local key government offices, CBO, ERCS
	Number of flood gates closed		Number of people			-
Post flood Intervention	Assess damage and ensure safe return	400 - 500 people	ETB	5	20,000	Ministry of water, DRM office
	Support affected households		Frequency/ day			-

## Roles & Responsibilities

The key institutions involved include:



## Monitoring & Learning

The Early Action Plan is regularly reviewed to improve preparedness.

Partners conduct:

- periodic monitoring of hazards
- community feedback sessions
- evaluation of early actions
- updates to warning thresholds

Lessons learned will help strengthen future disaster preparedness and response.



FORECAST: MON-FRI



# EARLY WARNING & EARLY ACTION PREPARE FOR FLOODS



CLEAN DRAINS IN & GULLIES



ELEVATE VULNERABLES



DEPLOY SANDDAGS AND BARRIERS



PREPARE EMERGENCY KIT

ገዢ ጠላሻ

ኪዩቲክ

የማህበረሰብ ማዕከል

SAFE HAVEN

ARTHRITIS